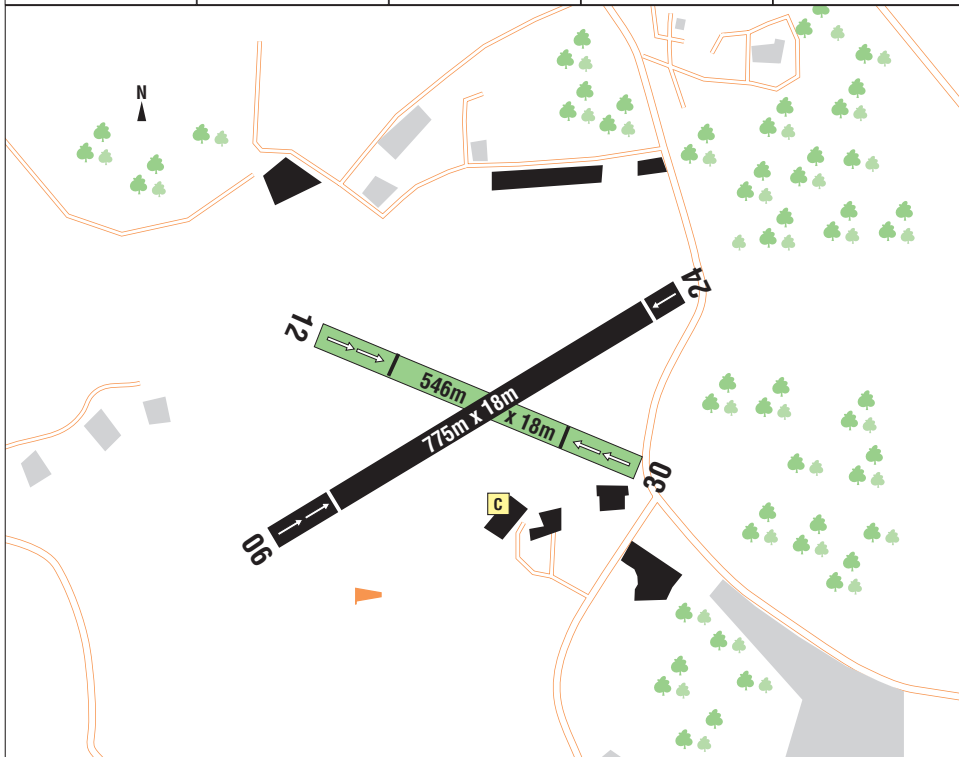


249ft 8mb	1.5nm E of Gerrards Cross N5135.30 W00030.78	PPR	Alternative AD Diversion AD	London Luton Elstree	Non-standard join
Denham		LARS Farnborough West 125.250	AFIS 130.725	APP Northolt 126.450	A/G 130.725



RWY	SURFACE	TORA	LDA	U/L	LIGHTING	RNAV			
06	Asphalt	686	706		Thr Rwy APAPI 4.5° LHS	LON	113.60	347	6.4
24	Asphalt	728	670		Thr Rwy APAPI 4.5° LHS				
12	Grass	363	419		Nil				
30	Grass	432	363		Nil				

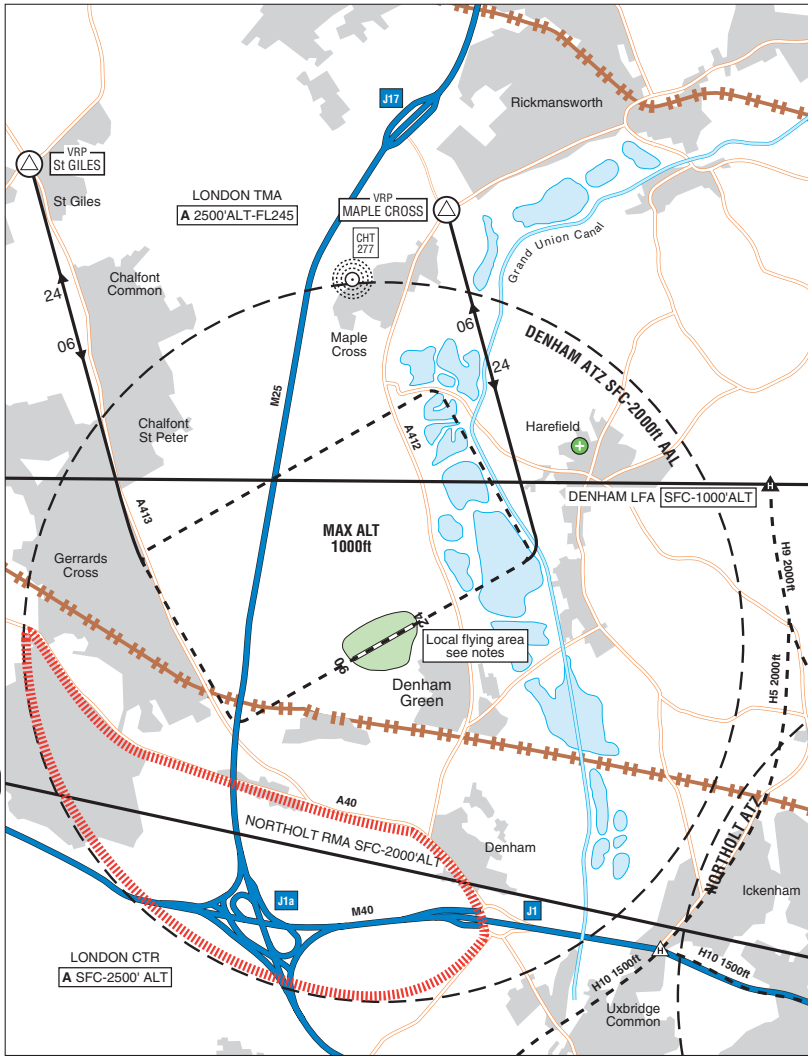
Remarks

PPR. Non-radio ACFT not accepted.
Visual aid to location: ID beacon green DN.

Warnings

A public road, adjacent to the AD boundary, crosses the extended centre line of Rwy24. Do not descend below the glide-path, or touchdown before the Thr. Visual glide slope guidance signals for Rwy06 are visible to the left of the extended centre line where normal obstacle clearance is not guaranteed. They should not be used until the ACFT is aligned with the Rwy.

Operating Hrs	Licensed Hrs 0800-1630 or SS (Summer) 0900-1730 or SS (Winter). AD available 0900-1900 (Summer) 0800-1800 (Winter) & by arr	Taxis	
Circuits	06 LH, 24 RH, 12 30 variable Max 750ft QFE (1000ft QNH) No overhead joins	Car Hire	Tel: 01895 270001
Landing Fee	Up to 1 tonne £12	Weather Info	Air SE MOEx
Maintenance	Ltd	Operator	Bickerton's Aerodromes Ltd Denham Aerodrome Uxbridge, Middlesex, UB9 5DE
Fuel	AVGAS 100LL JET A1 by arr		Tel: 01895 832161 (ATS) Fax: 01895 833486 www.egld.com
Disabled Facilities	Available		
Restaurant	Restaurant & club facilities available		



Circuit Traffic

Circuit traffic should stay south of Chalfont St Peter. Additional restrictions apply to twin engined ACFT & helicopters.

Flights without compliance to IFR within the Denham ATZ are permitted subject to the following conditions:

- 1 ACFT must remain clear of cloud and in sight of the surface.
- 2 Maximum Alt 1000ft QNH, with a minimum visibility of 3km.
- 3 The Area to the south of the A40 must be avoided at all times.

Arrivals:

Rwy06 Join via Chalfont St Giles (N5138.02 W00034.02) directly to base leg to the E of the A413 to avoid Gerrards Cross.

Rwy24 Join via Maple Cross (N5137.77 W00030.25) directly to base leg over the lakes to avoid Harefield.

Departures:

Rwy06 Turn left over the lakes to avoid Harefield.

Rwy24 After take-off continue straight ahead until past the houses on the right, then turn right before the A413 to avoid over flying Gerrards Cross.

Visual Reference Point (VRP)

	VOR/DME	VOR/DME	NDB
Maple Cross	BNN 166°/6nm	BPK 247°/17nm	CHT 057°
N5137.77 W00030.25			
Chalfont St Giles	BNN 189°/6nm	BPK 250°/19nm	CHT 292°
N5138.02 W00034.02			